

Data Extraction from Student Cards for a Non-Profit Mathematics Competition Organization



Factoring the Right Solution for Data Extraction

A national middle school mathematics competition organization was looking for a partner to help extract data from student information cards into a useable format.

The non-profit organization has had over 30 years of cultivating the talent of young minds to inspire and help build confidence. Students would enter into the competition program and the top students from each Chapter Competition would advance to the State Competition and then on to Nationals.

Applying the Right Outsourcing Equation

With around 14,000 student cards, each one provided general information about the students individually, such as name, address, and school name.

The biggest challenge resulted from all the data being handwritten. Accurately extracting handwritten data requires a significant amount of manual effort and time. As a result, the organization sought out ARDEM as an outsourcing partner to streamline the data extraction process.

Running handwritten data through an automated data capture process would result in highly inaccurate data. With years of experience working with general information cards, ARDEM proposed a comprehensive solution that incorporated both scanning and data extraction.

Key Benefits

- Experience digitizing information cards
- Streamlined handwritten data extraction
- Extensive Quality Assurance

5 Ways to Achieve Accurate Data

- ⇒ Identify the source of the inaccuracies
- ⇒ Utilize the latest technology
- ⇒ Double Key Data Entry
- ⇒ Multiple Validation Routines
- ⇒ Optimized Workflows

All of the student cards would be sent directly to ARDEM where they would be organized and digitized. Digitizing the student cards would increase both the speed and efficiency of data extraction.

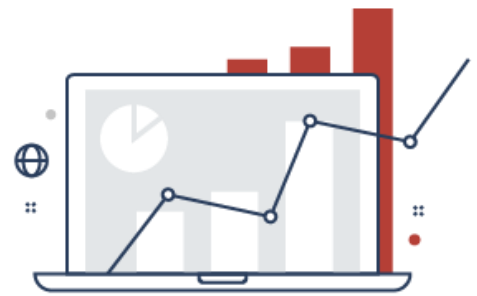
Using a double key data entry process, two analysts would enter the same data and both sets of data would be cross-referenced to highlight any discrepancies. If there was any inconsistency in both data sets, a third data analyst would match the data against the image and validate the final data set.

In addition to the double key entry method, a combination of multiple quality assurance measures was put into place to create a checks and balances system to ensure data accuracy.

ARDEM's Valued Solution

In the past, this mathematics competition organization was manually extracting data off every card and entering it into a database. In addition to ARDEM's responsiveness, the organization quickly recognized ARDEM's ability to provide highly accurate data within a quick cycle time.

Partnering with ARDEM not only reduced operational costs, but it also allowed the mathematics competition organization to focus on enhancing the experiences of students to make learning math fun.



What is the most common challenge of data extraction?





Large volumes of data require a significant amount of time to clean and organize the data before it can become usable and significant.

About ARDEM Incorporated

ARDEM Incorporated delivers success companies looking to efficiently streamline their processes and improve ROI. We implement the world's most sophisticated Technology platform combining human interaction with advance technologies to automate business processes and lower operational costs.

ARDEM Incorporated  <https://www.ardem.net>

888-359-2679 | 908-359-2600

 @ARDEMInc  <https://www.linkedin.com/company/ardem-incorporated>  <https://www.facebook.com/ARDEMIncorporated/>  pricing@ardem.net

Copyright © 2018 ARDEM Incorporated All rights reserved. ARDEM Incorporated, the ARDEM Incorporated logo, and among others are either registered trademarks or trademarks ARDEM Incorporated. in the United States and/or other countries. Other product names used in this publication are for identification purposes only and may be trademarks of their respective owners.

